

BUSINESS PARK / MIXED USE EMPLOYMENT LAND FOR SALE

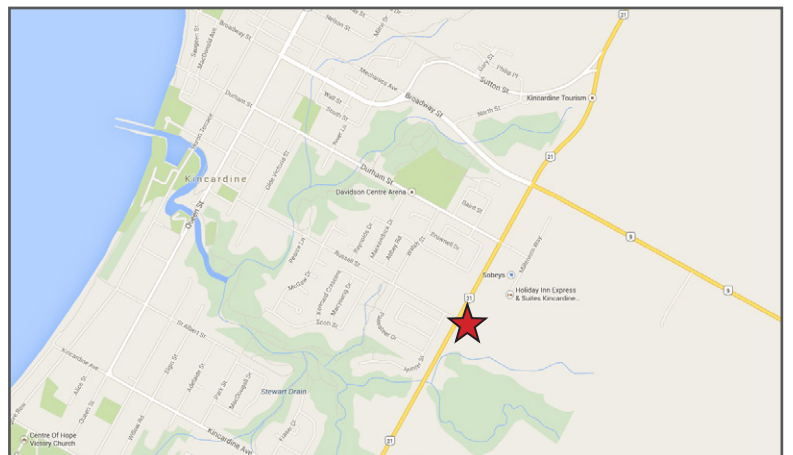
# KINCARDINE

HIGHWAY 21 & RUSSELL ST.



## HIGHLIGHTS

- Land is adjacent to Sobey's and Canadian Tire.



For more information, please contact:

Allan Scully  
905 326 6400 x 7616  
ascully@smartcentres.com

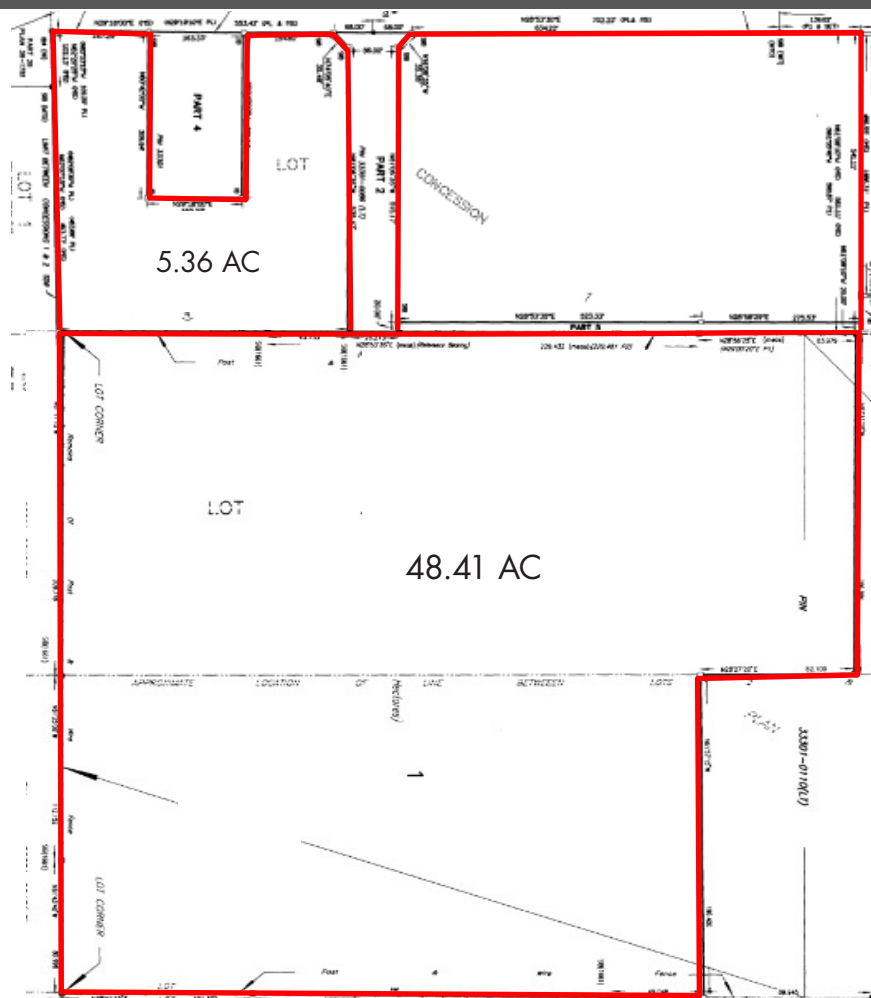


700 APPLEWOOD CRES.  
VAUGHAN, ON. L4K 5X3  
WWW.SMARTCENTRES.COM

BUSINESS PARK / MIXED USE EMPLOYMENT LAND FOR SALE

# KINCARDINE

HIGHWAY 21 & RUSSELL ST.



## ADDITIONAL INFORMATION

### MUNICIPAL ADDRESS

Highway 21 and Russell Street, Kincardine, ON.

### ZONING

Business Park

### OFFICIAL PLAN DESIGNATION

Business Park

### SITE DESCRIPTION

Frontage onto Highway 21 at "T" intersection with Russell Street. Vacant land zoned for commercial use. Property consists of 3 parcels.



For more information, please contact:

Allan Scully  
905 326 6400 x 7616  
ascully@smartcentres.com

700 APPLEWOOD CRES.  
VAUGHAN, ON. L4K 5X3  
WWW.SMARTCENTRES.COM