

BUSINESS PARK / MIXED USE EMPLOYMENT LAND FOR SALE

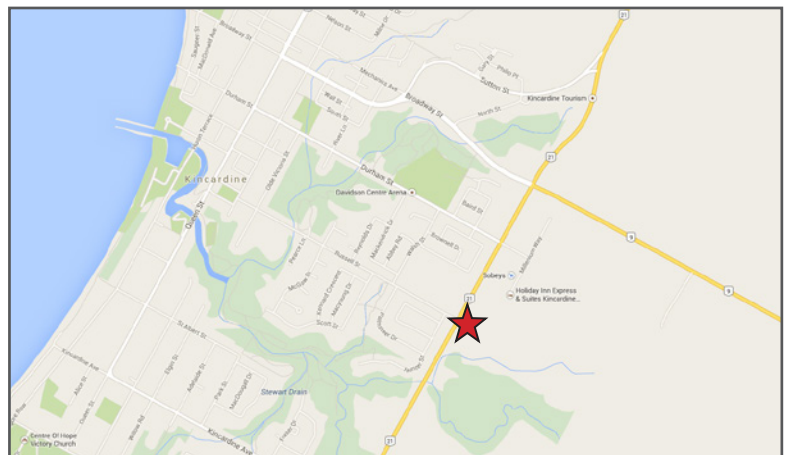
KINCARDINE

HIGHWAY 21 & RUSSELL ST.



HIGHLIGHTS

- Land is adjacent to Sobey's and Canadian Tire.



For more information, please contact:

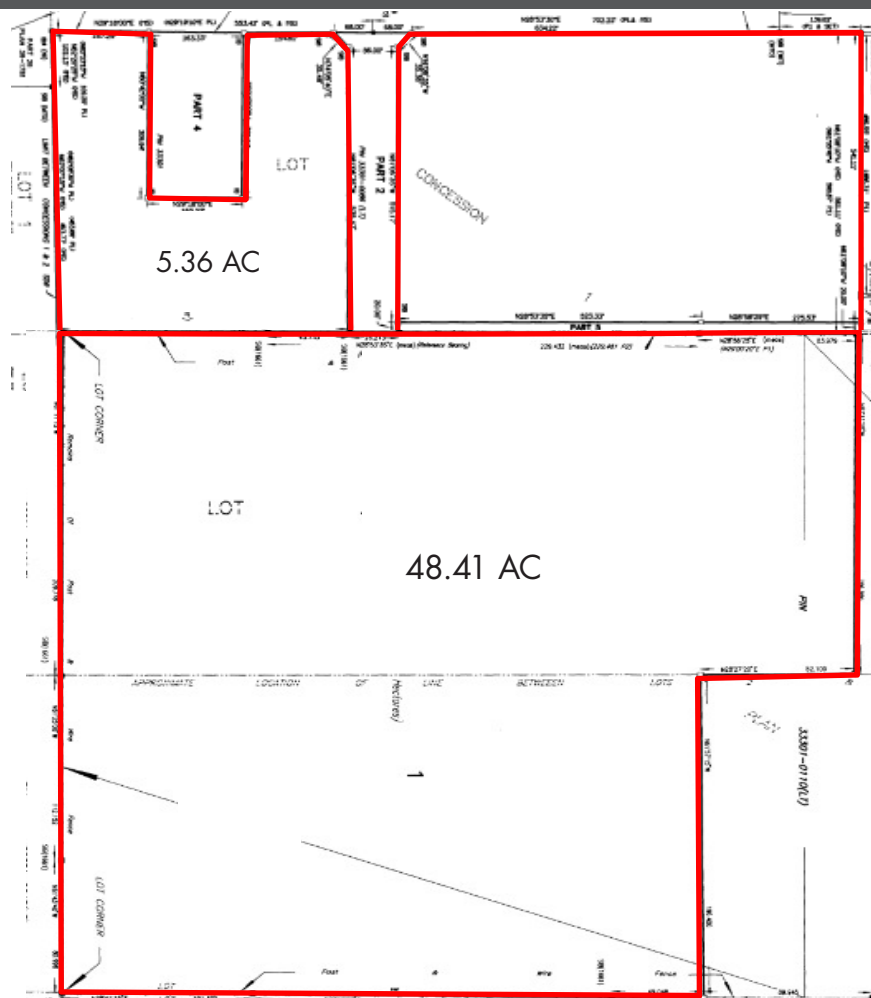
William Woodfine
905 326 6400 ext 7622
wwoodfine@smartcentres.com

3200 HIGHWAY 7
VAUGHAN, ON. L4K 5Z5
WWW.SMARTCENTRES.COM

BUSINESS PARK / MIXED USE EMPLOYMENT LAND FOR SALE

KINCARDINE

HIGHWAY 21 & RUSSELL ST.



ADDITIONAL INFORMATION

MUNICIPAL ADDRESS

Highway 21 and Russell Street, Kincardine, ON.

ZONING

Business Park

OFFICIAL PLAN DESIGNATION

Business Park

SITE DESCRIPTION

Frontage onto Highway 21 at "T" intersection with Russell Street. Vacant land zoned for commercial use. Property consists of 3 parcels.

For more information, please contact:

William Woodfine
905 326 6400 ext 7622
wwoodfine@smartcentres.com

3200 HIGHWAY 7
VAUGHAN, ON. L4K 5Z5
WWW.SMARTCENTRES.COM