

COMMERCIAL / MIXED USE EMPLOYMENT LAND FOR SALE

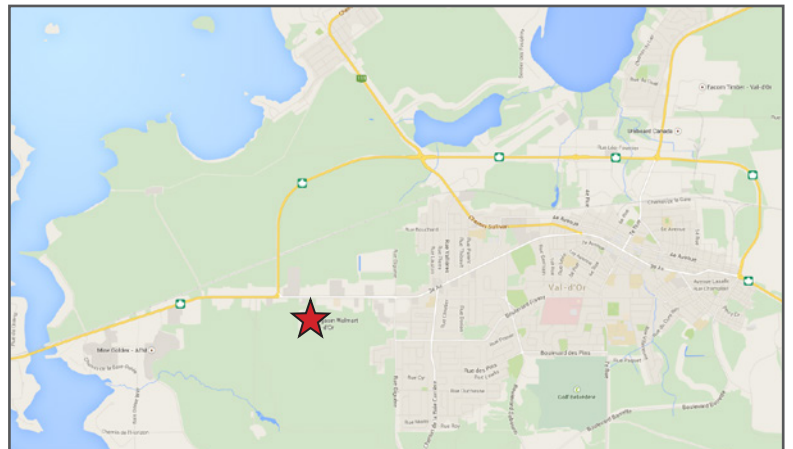
VAL D'OR

ROUTE 117 & BOULEVARD BARETTE



HIGHLIGHTS

- Prime location adjacent to Walmart store.
- Proximity to new major boulevard connection.



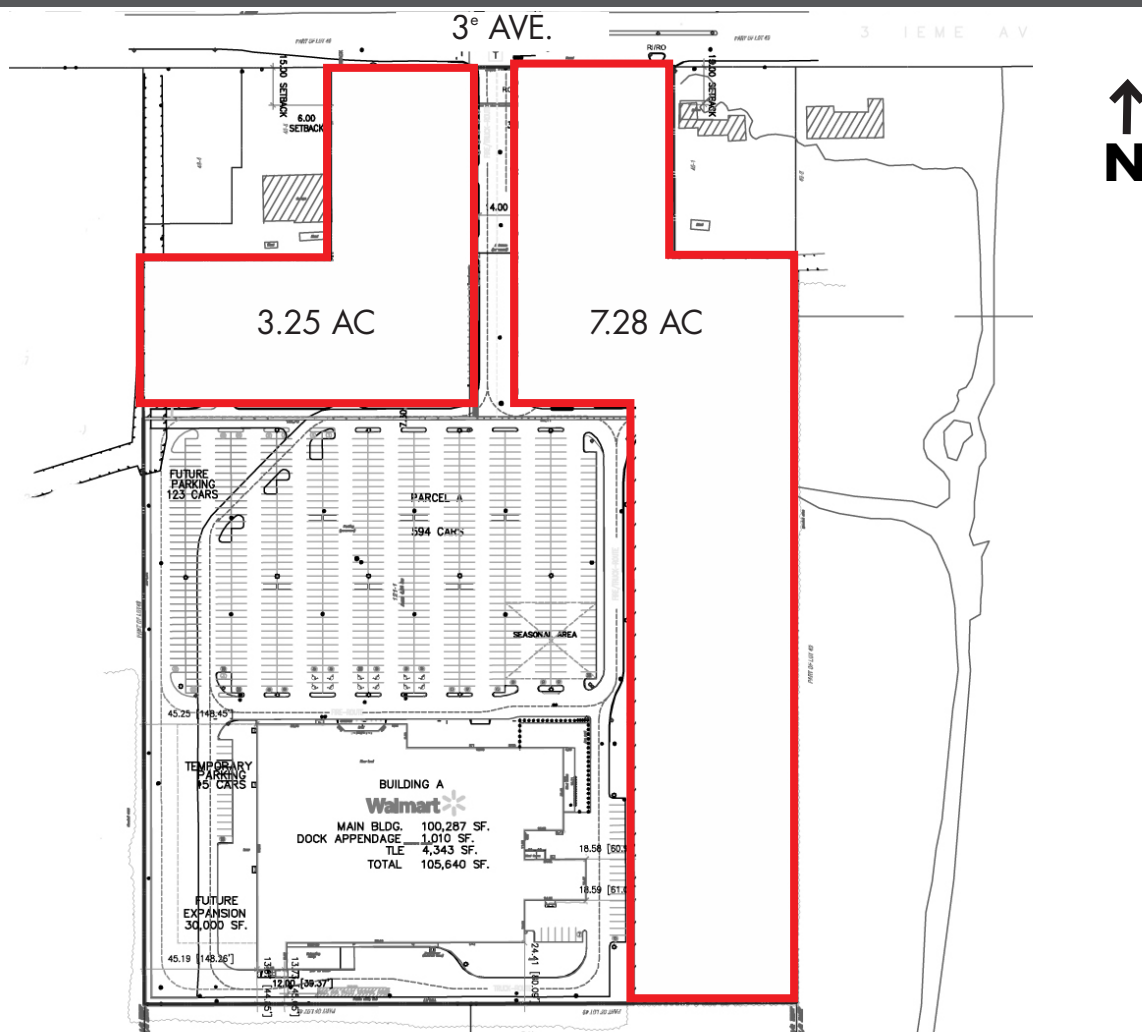
Pour plus d'information, veuillez contacter:

Herbert Nunes
514 738 8383 x 5224
hnunes@smartcentres.com

COMMERCIAL / MIXED USE EMPLOYMENT LAND FOR SALE

VAL D'OR

ROUTE 117 & BOULEVARD BARETTE



ADDITIONAL INFORMATION

MUNICIPAL ADDRESS

1855, 3E Avenue W.

ZONING

Commercial

OFFICIAL PLAN DESIGNATION

Commercial, Public utilities, Industrial, Recreation

SITE DESCRIPTION

Lands are irregular shape with frontage on 3rd Avenue. Lands are serviced and ready to build.

Pour plus d'information, veuillez contacter:

Herbert Nunes
514 738 8383 x 5224
hnunes@smartcentres.com

202 - 395 BOUL. STE-CROIX
MONTRÉAL, QC. H4N 2L3
WWW.SMARTCENTRES.COM