

BUSINESS PARK / MIXED USE EMPLOYMENT LAND FOR SALE

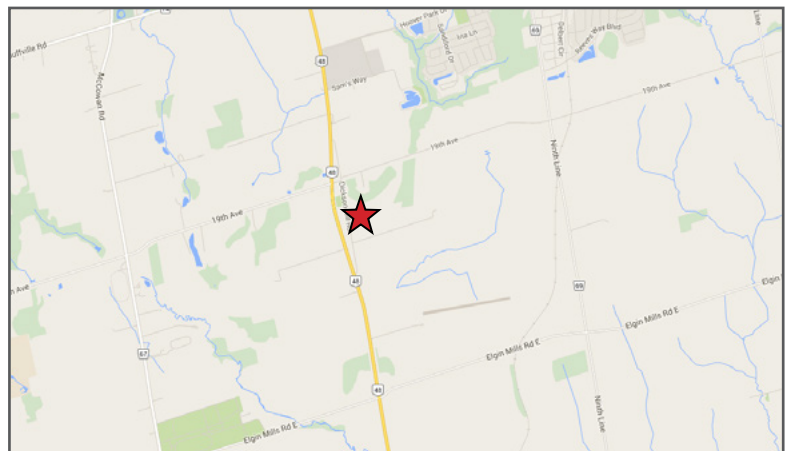
STOUFFVILLE

HWY 48 & SAM'S WAY



HIGHLIGHTS

- Prime business park and industrial parcel with Hwy 48 frontage; Parcel can be subdivided to various lot sizes.



For more information, please contact:

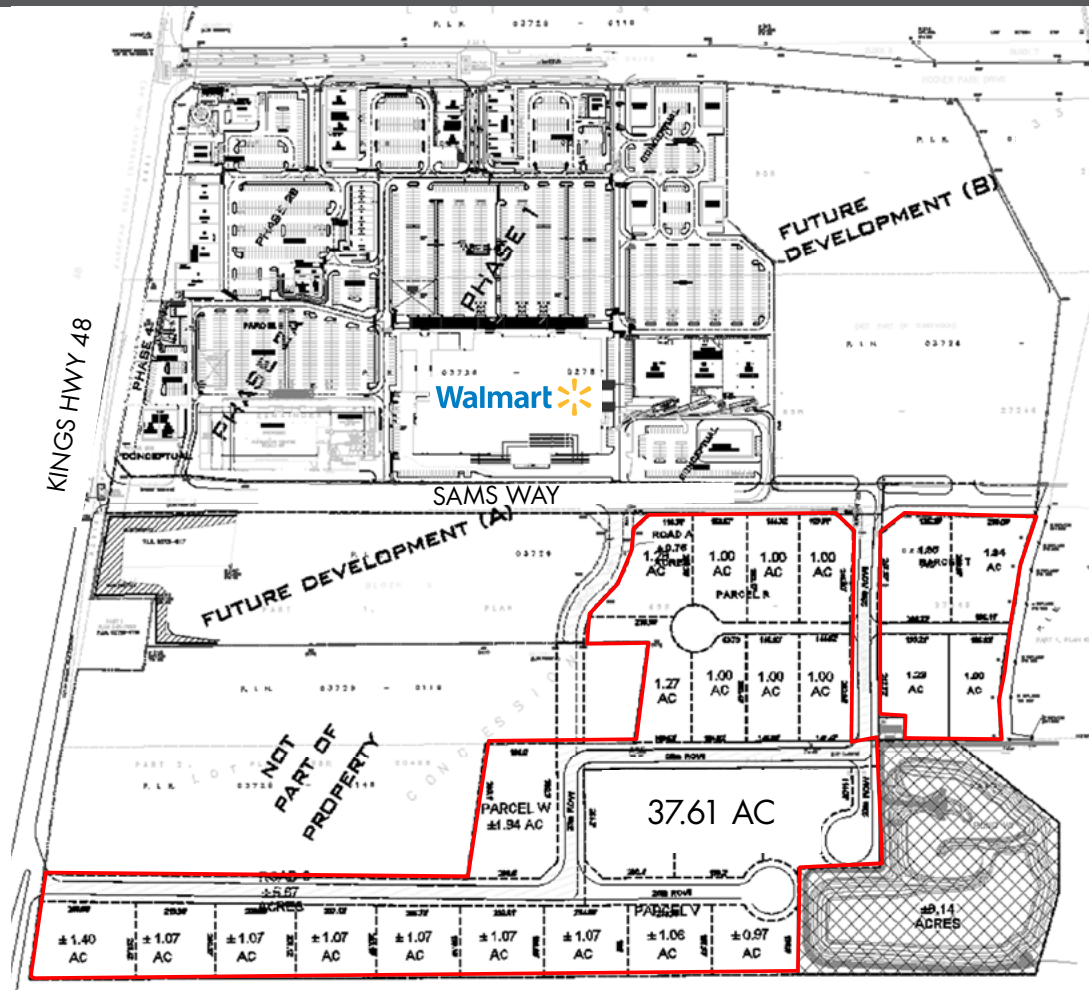
Mauro Pambianchi
905 326 6400 x 7682
mpambianchi@smartcentres.com

3200 HIGHWAY 7
VAUGHAN, ON. L4K 5Z5
WWW.SMARTCENTRES.COM

BUSINESS PARK / MIXED USE EMPLOYMENT LAND FOR SALE

STOUFFVILLE

HWY 48 & SAM'S WAY



ADDITIONAL INFORMATION

MUNICIPAL ADDRESS

11749 Highway 48, Stouffville, ON.

ZONING

Employment Business Park (EBP-7)
Employment Light (EL-4 & 2)

OFFICIAL PLAN DESIGNATION

Business Park Area and Industrial Area

SITE DESCRIPTION

Lands are irregular shape and have existing frontage onto Hwy 48, Sam's Way and Rougeview Road. The creation of additional lot frontage through subdivision process is possible. Site abuts Hoover Park Town Centre, a shopping centre anchored by a Walmart and Canadian Tire.

For more information, please contact:

Mauro Pambianchi
905 326 6400 x 7682
mpambianchi@smartcentres.com

3200 HIGHWAY 7
VAUGHAN, ON. L4K 5Z5
WWW.SMARTCENTRES.COM