

RESIDENTIAL / MIXED USE EMPLOYMENT LAND FOR SALE

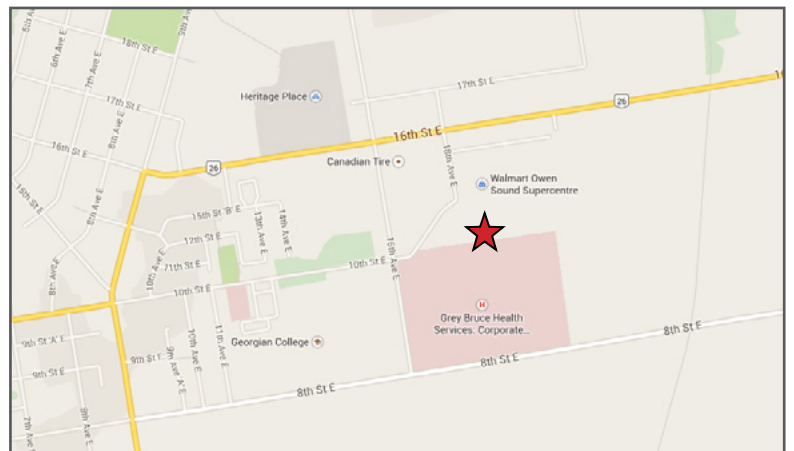
OWEN SOUND

18TH AVE. E & HWY 26



HIGHLIGHTS

- Zoned Residential land in close proximity to retail and institutional services east of downtown.



For more information, please contact:

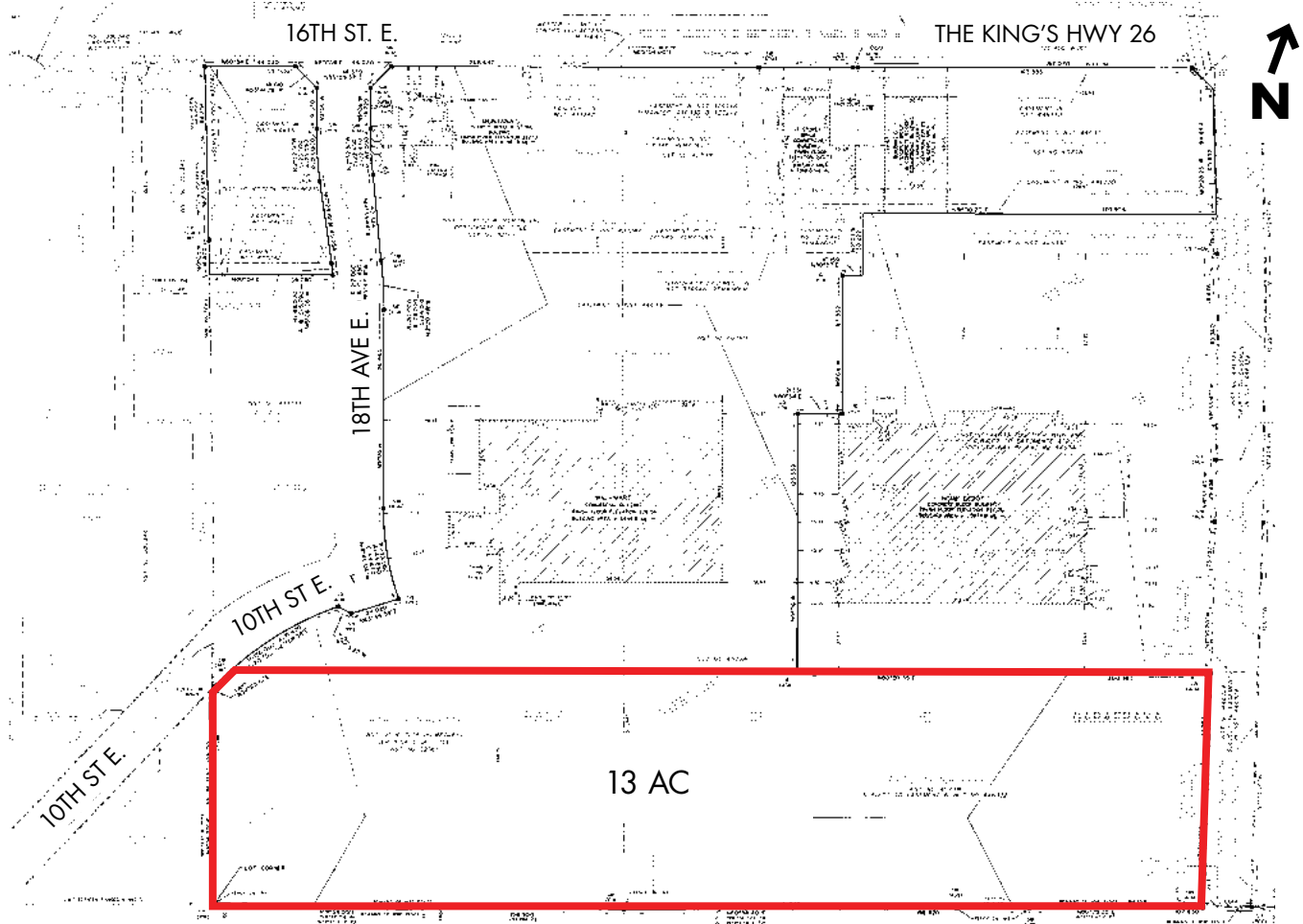
Allan Scully
905 326 6400 ext 7616
ascully@smartcentres.com

3200 HIGHWAY 7
VAUGHAN, ON. L4K 5Z5
WWW.SMARTCENTRES.COM

RESIDENTIAL / MIXED USE EMPLOYMENT LAND FOR SALE

OWEN SOUND

18TH AVE. E & HWY 26



ADDITIONAL INFORMATION

MUNICIPAL ADDRESS

1555 18th Avenue E., Owen Sound, ON.

ZONING

Low Density Residential (H)

OFFICIAL PLAN DESIGNATION

Residential

SITE DESCRIPTION

13 acres of zoned Residential land located in the Sydenham Heights area of the City of Owen Sound. Located in close proximity to a variety of existing retail and institutional services just east of downtown.

For more information, please contact:

Allan Scully
905 326 6400 ext 7616
ascully@smartcentres.com

3200 HIGHWAY 7
VAUGHAN, ON. L4K 5Z5
WWW.SMARTCENTRES.COM