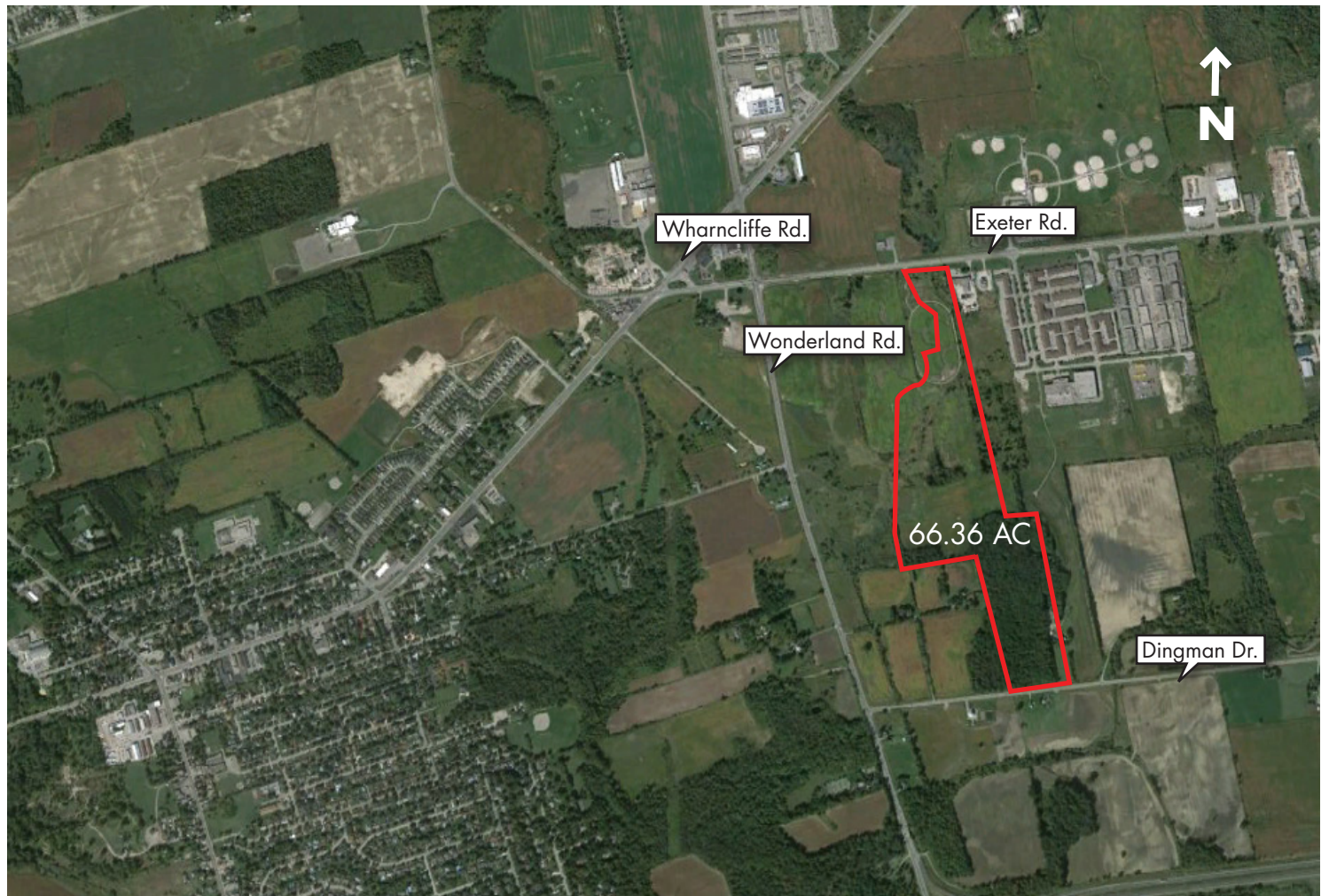


RESIDENTIAL LAND FOR SALE

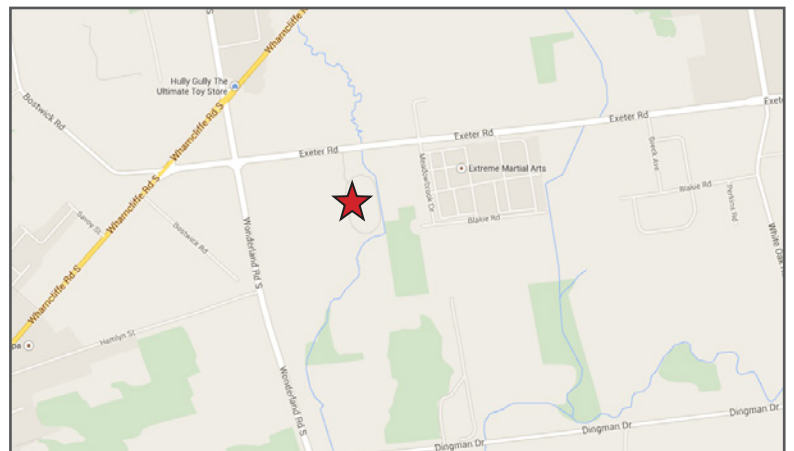
# LONDON SW II

EXETER RD. & WONDERLAND RD.



## HIGHLIGHTS

- Proximity to Hwy 402 and future Hwy 401 interchange
- Designated for residential development



For more information, please contact:

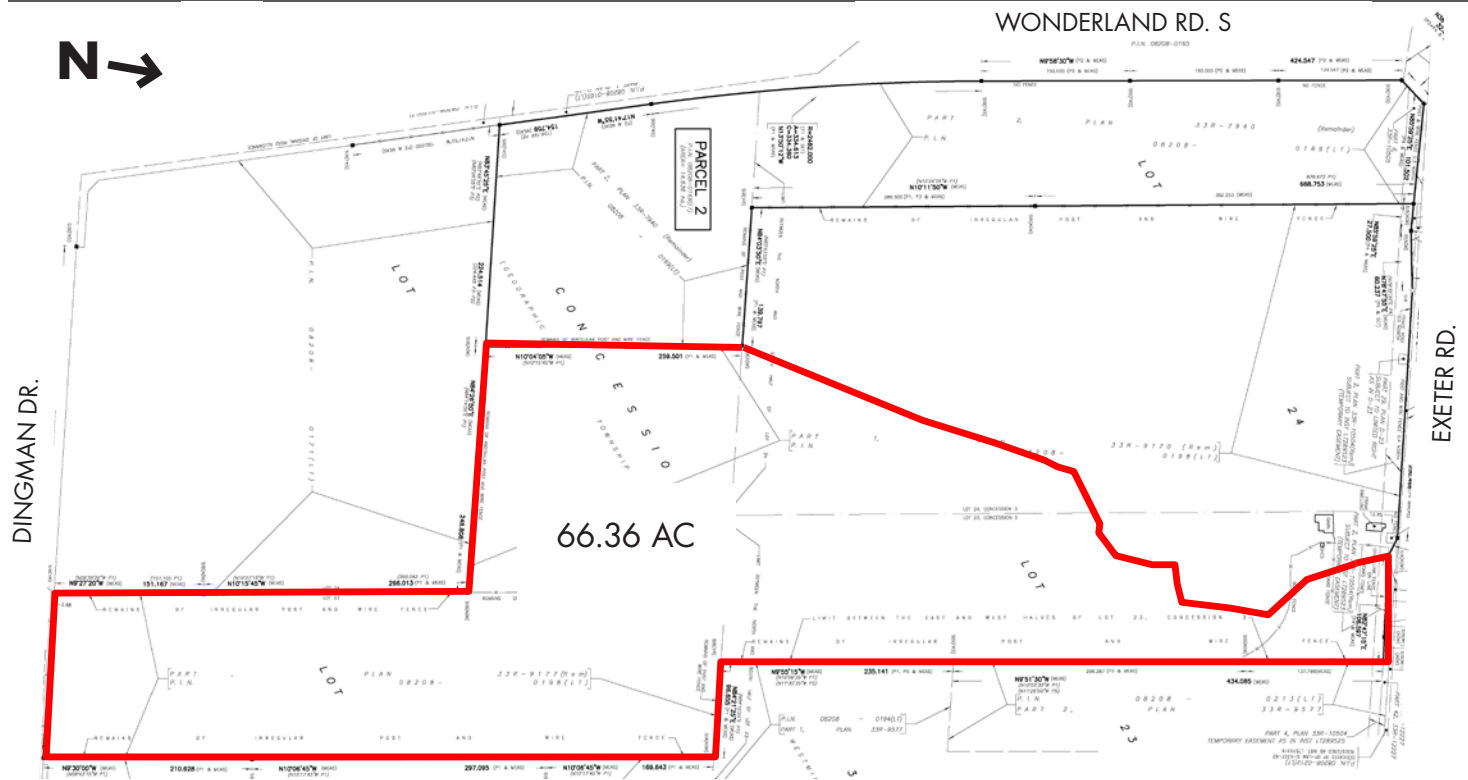
**Christine Cote**  
905 326 6400 ext 7862  
ccote@smartcentres.com

3200 HIGHWAY 7  
VAUGHAN, ON. L4K 5Z5  
WWW.SMARTCENTRES.COM

RESIDENTIAL LAND FOR SALE

# LONDON SW II

## EXETER RD. & WONDERLAND RD.



## ADDITIONAL INFORMATION

### MUNICIPAL ADDRESS

99 Exeter Road, London, ON.

### SITE DESCRIPTION

Unimproved greenfield parcel.

### ZONING

Environmental Review  
Open Space (OS4)  
Urban Reserve (UR6)

### OFFICIAL PLAN DESIGNATION

Neighborhoods/Green Space/Environmental Review

For more information, please contact:

**Christine Cote**  
905 326 6400 ext 7862  
ccote@smartcentres.com

3200 HIGHWAY 7  
VAUGHAN, ON. L4K 5Z5  
WWW.SMARTCENTRES.COM