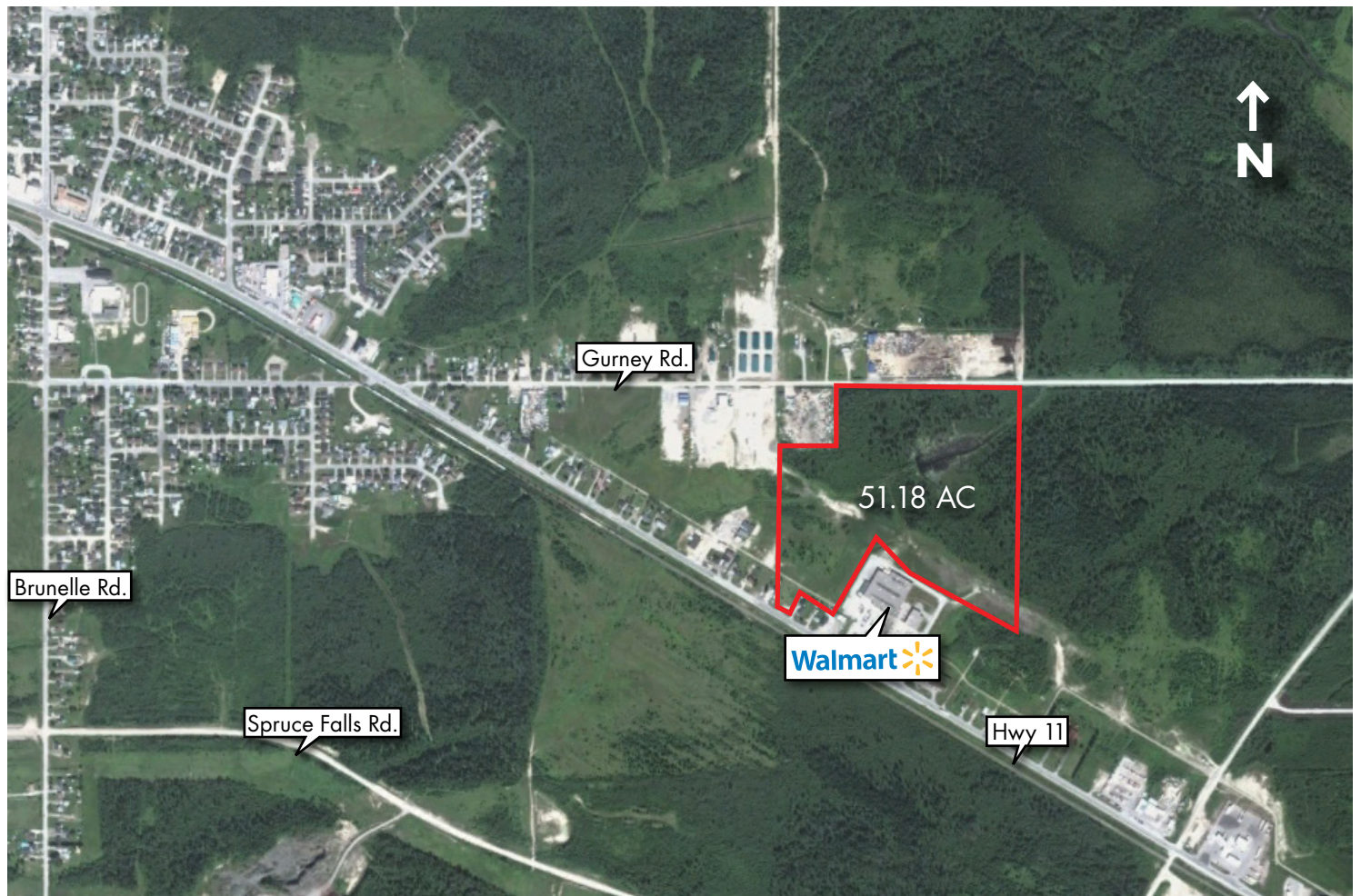


BUSINESS PARK / MIXED USE EMPLOYMENT LAND FOR SALE

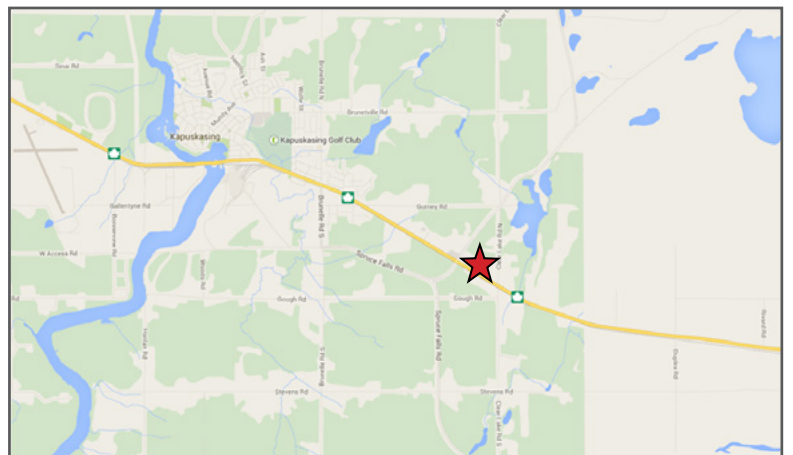
# KAPUSKASING

HIGHWAY 11 & GURNEY RD.



## HIGHLIGHTS

- Commercial land adjacent to a Walmart Supercentre.



For more information, please contact:

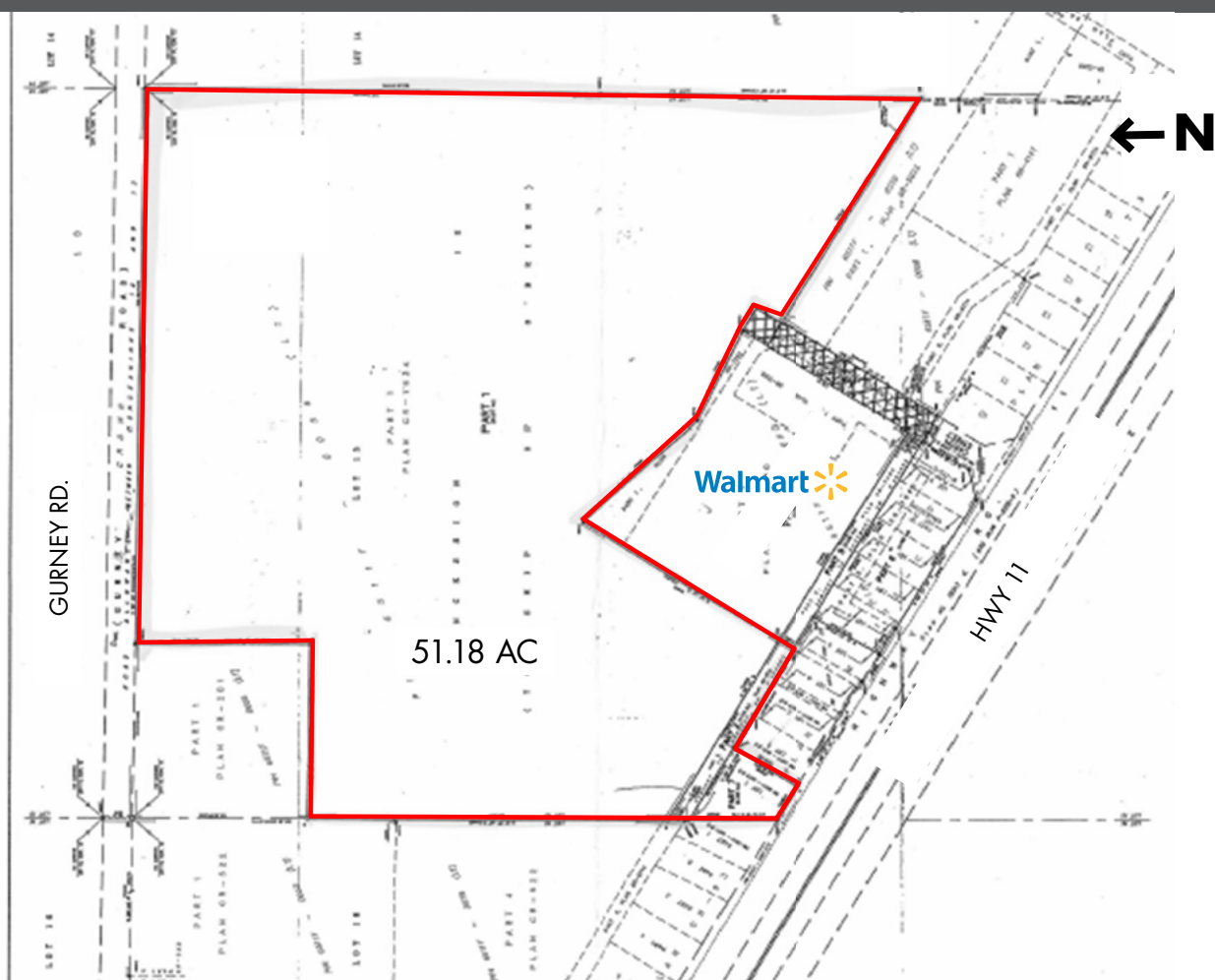
Allan Scully  
905 326 6400 ext 7616  
ascully@smartcentres.com

3200 HIGHWAY 7  
VAUGHAN, ON. L4K 5Z5  
WWW.SMARTCENTRES.COM

BUSINESS PARK / MIXED USE EMPLOYMENT LAND FOR SALE

# KAPUSKASING

HIGHWAY 11 & GURNEY RD.



## ADDITIONAL INFORMATION

### MUNICIPAL ADDRESS

350 Government Road, Kapuskasing, ON.

### ZONING

Business Park (BP-4)

### OFFICIAL PLAN DESIGNATION

Employment Area

### SITE DESCRIPTION

Frontage onto both Highway 11 & Gurney Road. Parcel is vacant with split commercial and industrial zoning.

For more information, please contact:

Allan Scully  
905 326 6400 ext 7616  
ascully@smartcentres.com

3200 HIGHWAY 7  
VAUGHAN, ON. L4K 5Z5  
WWW.SMARTCENTRES.COM