

BUSINESS PARK / MIXED USE EMPLOYMENT LAND FOR SALE

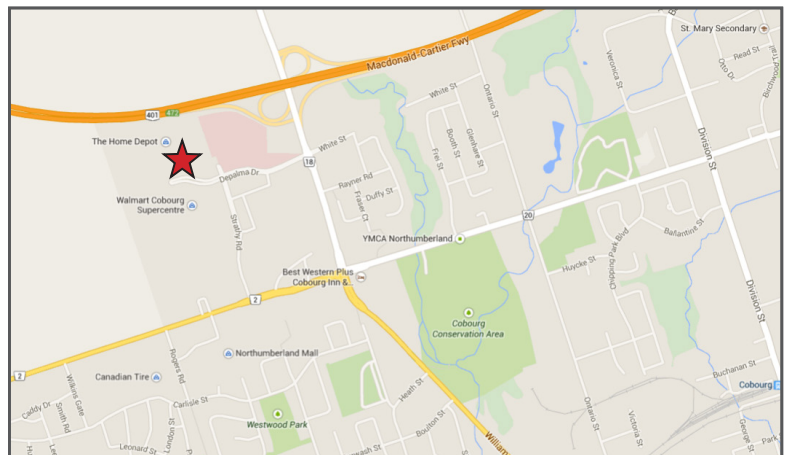
COBOURG

BURNHAM ST. & DEPALMA DR.



HIGHLIGHTS

- The site has great access to Hwy 401, and it is situated in close proximity to Northumberland Hills hospital, Home Depot and Walmart Supercentre.



For more information, please contact:

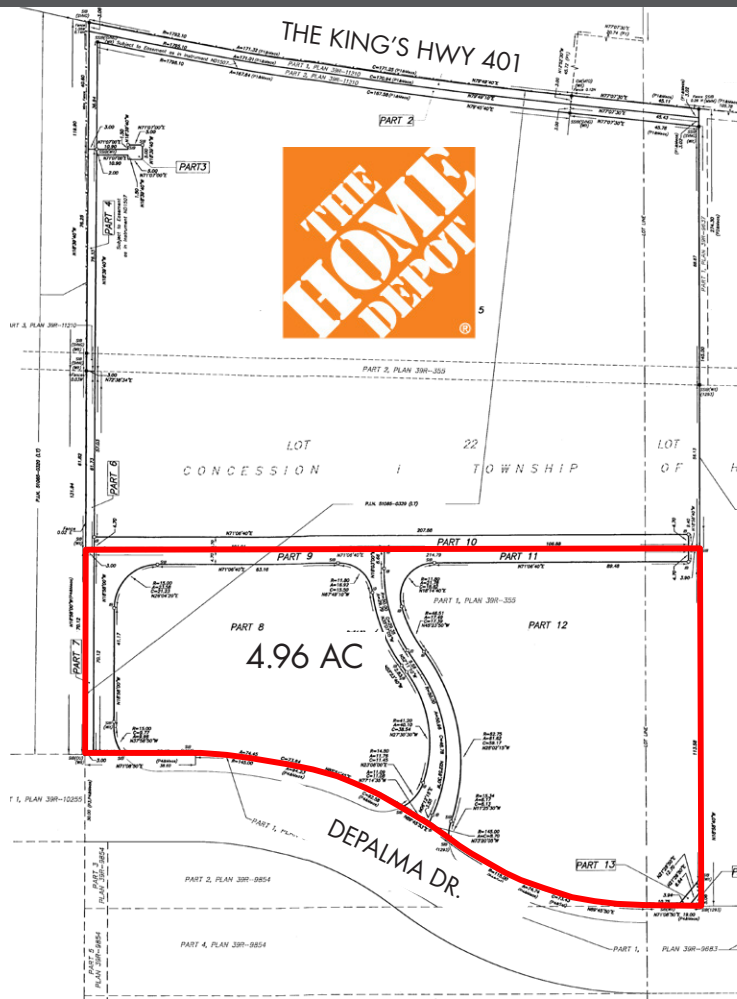
Marianne O'Leary
905 760 6200 x 7257
moleary@smartcentres.com

700 APPLEWOOD CRES.
VAUGHAN, ON. L4K 5X3
WWW.SMARTCENTRES.COM

BUSINESS PARK / MIXED USE EMPLOYMENT LAND FOR SALE

COBOURG

BURNHAM ST. & DEPALMA DR.



ADDITIONAL INFORMATION

MUNICIPAL ADDRESS

73 Strathy Rd., Cobourg, ON.

ZONING

Business Park (BP-4)

OFFICIAL PLAN DESIGNATION

Employment Area

SITE DESCRIPTION

Unimproved land that's serviced to the lot line. The site sits adjacent to a Home Depot and is visible from Hwy 401.



For more information, please contact:

Marianne O'Leary
905 760 6200 x 7257
moleary@smartcentres.com

700 APPLEWOOD CRES.
VAUGHAN, ON. L4K 5X3
WWW.SMARTCENTRES.COM