

BUSINESS PARK / MIXED USE EMPLOYMENT LAND FOR SALE

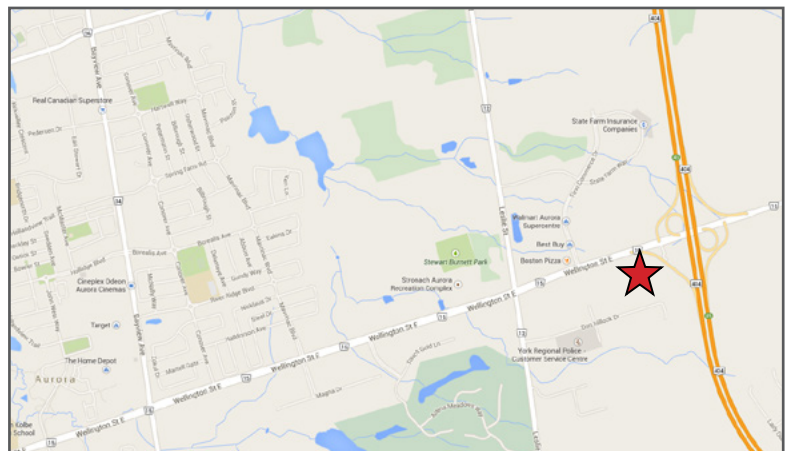
AURORA S

WELLINGTON ST. E. & HWY 404



HIGHLIGHTS

- The property is located on the west side of Highway 404 and is the gateway to Aurora.
- The subject lands are part of a regional centre of commercial retail and employment lands.



For more information, please contact:

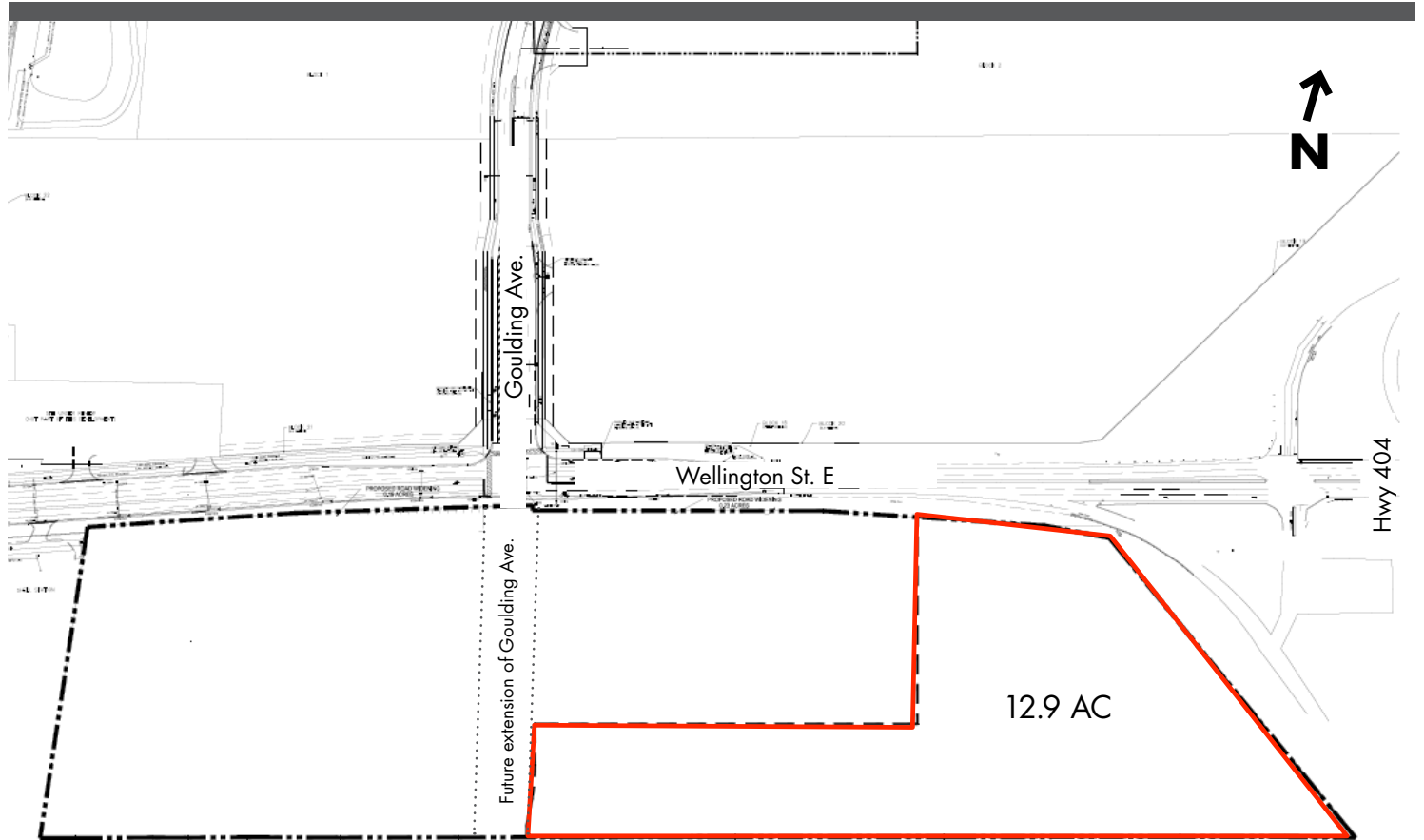
Allan Scully
905 326 6400 ext 7616
ascully@smartcentres.com

3200 HIGHWAY 7
VAUGHAN, ON. L4K 5Z5
WWW.SMARTCENTRES.COM

BUSINESS PARK / MIXED USE EMPLOYMENT LAND FOR SALE

AURORA S

WELLINGTON ST. E. & HWY 404



ADDITIONAL INFORMATION

MUNICIPAL ADDRESS

1623 Wellington Street, Aurora, ON.

ZONING

Business Park (BP)

OFFICIAL PLAN DESIGNATION

Business Park (BP)

SITE DESCRIPTION

12.90 acres of zoned Business Park land located at the southwest corner of Wellington Street East and Highway 404. Close proximity to existing interchange and great visibility from Highway 404. Located across from existing commercial development along Wellington Street which is the gateway to Aurora. Aurora is an affluent, well-educated market. 5,000 new homes coming online in the immediate area in the next 7 years. Aurora is also home to Magna.

For more information, please contact:

Allan Scully
905 326 6400 ext 7616
ascully@smartcentres.com

3200 HIGHWAY 7
VAUGHAN, ON. L4K 5Z5
WWW.SMARTCENTRES.COM